



### Technical description

**Applications:**

Heating and cooling systems  
Tapwater systems  
Process systems where the media does not affect the incoming material.

**Function:**

Shut-off

**Pressure class:**

PN 16

**Temperature:****58 940:**

Max. working temperature: 120°C

Min. working temperature: -20°C

**58 950:**

Max. working temperature: 90°C

Min. working temperature: -20°C

**Material:**

Valve body: Die cast AMETAL®

Ball: Chrome plated AMETAL®, double nickel

Handle: Glass fibre re-inforced polyamid plastic

Rating plate: Acetal plastic

Cover screws: Stainless steel (The valve has cover screws for DN 32-50, DN 10-25 has a threaded top section)

Seat elements and O-rings: 58 940: EPDM rubber,

58 950: Nitrile rubber

Handle reduction unit: Nickel-plated die-cast zinc alloy

Control handle: Glass fibre re-inforced plastic

AMETAL® is the dezincification resistant alloy of TA.

**Surface treatment:**

Nickel plated

**Marking:**

TA, DR, DN, PN

## TA 900 iSi Domestic water and water with antifreeze

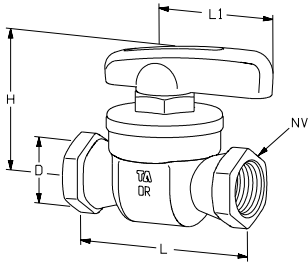
**EPDM rubber**

**Max. working temperature: 120°C**

**Min. working temperature: -20°C**

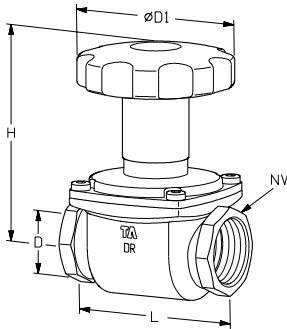
**Note!** Not suitable for LPG or medical gases.

**With red handle**



TA No	DN	D	L	L1	H	NV	Kvs
58 940-110 <sup>1</sup>	10	G3/8	59	45,5	48	22	6
58 940-115 <sup>1</sup>	15	G1/2	74	45,5	52	27	12
58 940-120 <sup>1</sup>	20	G3/4	80	59	63	32	30
58 940-125	25	Rp1	91	59	69	41	65
58 940-132	32	Rp1 1/4	110	79	87	50	90
58 940-140	40	Rp1 1/2	120	79	93	58	150
58 940-150	50	Rp2	141	79	99	70	220

**Fitted with red handle reduction unit**



TA No	DN	D	D1	L	H	NV	Kvs
58 940-732	32	Rp1 1/4	110	110	130	50	90
58 940-740	40	Rp1 1/2	110	120	135	58	150
58 940-750	50	Rp2	110	141	142	70	220

1) Prepared for KOMBI. KOMBI compression couplings are ordered separately. For more information see KOMBI catalogue leaflet.

Kvs = m<sup>3</sup>/h at a pressure drop of 1 bar and fully open valve.

## TA 900 iSi Universal

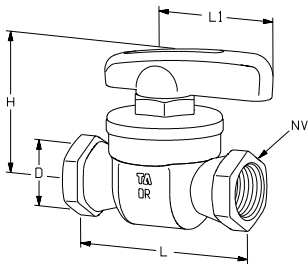
**Nitrile rubber**

**Max. working temperature: 90°C**

**Min. working temperature: -20°C**

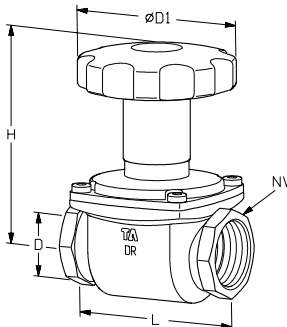
**Note!** Not suitable for LPG or medical gases.

**With blue handle**



TA No	DN	D	L	L1	H	NV	Kvs
58 950-110 <sup>1</sup>	10	G3/8	59	45,5	48	22	6
58 950-115 <sup>1</sup>	15	G1/2	74	45,5	52	27	12
58 950-120 <sup>1</sup>	20	G3/4	80	59	63	32	30
58 950-125	25	Rp1	91	59	69	41	65
58 950-132	32	Rp1 1/4	110	79	87	50	90
58 950-140	40	Rp1 1/2	120	79	93	58	150
58 950-150	50	Rp2	141	79	99	70	220

**Fitted with blue handle reduction unit**



TA No	DN	D	D1	L	H	NV	Kvs
58 950-732	32	Rp1 1/4	110	110	130	50	90
58 950-740	40	Rp1 1/2	110	120	135	58	150
58 950-750	50	Rp2	110	141	142	70	220

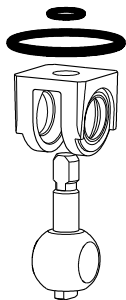
1) Prepared for KOMBI. KOMBI compression couplings are ordered separately. For more information see KOMBI catalogue leaflet.

Kvs = m<sup>3</sup>/h at a pressure drop of 1 bar and fully open valve.

## Spare parts TA 900 iSi

### Spare parts kit for 58 950

Nitrile rubber (max. 90°C)

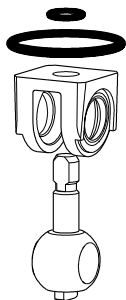


TA No	For DN
58 900-010	10
58 900-015	15
58 900-020	20
58 900-025	25
58 900-032	32
58 900-040	40
58 900-050	50

**Note!** Not suitable for LPG or medical gases.

### Spare parts kit for 58 940

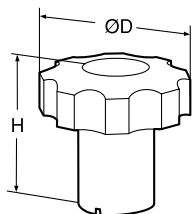
EPDM rubber (Max 120°C)



TA No	For DN
58 910-010	10
58 910-015	15
58 910-020	20
58 910-025	25
58 910-032	32
58 910-040	40
58 910-050	50

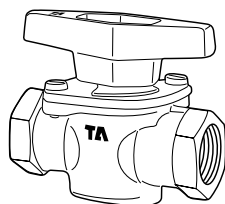
**Note!** Not suitable for LPG or medical gases.

### Handle reduction unit



TA No	For DN	ØD	H	Colour
58 980-032	32-50	110	80	Blue
58 981-032	32-50	110	80	Red

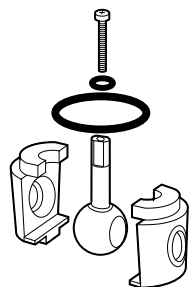
## Spare parts, earlier iSi valve



### Spare parts kit

Universal

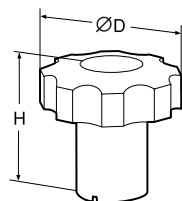
Nitrile rubber (Max. 90°C)



TA No	For DN
58 700-008	8-10
58 700-015	15
58 700-020	20
58 700-025	25
58 700-032	32
58 700-040	40-50

**Note!** Not suitable for LPG or medical gases.

### Handle reduction unit



TA No	For DN	ØD	H	Colour
58 780-008	8-15	70	75	Blue
58 780-020	20	70	75	Blue
58 780-025	25	110	80	Blue
58 780-032	32-50	110	80	Blue
58 781-008	8-15	70	75	Red
58 781-020	20	70	75	Red
58 781-025	25	110	80	Red
58 781-032	32-50	110	80	Red